



Cadenas introduction manual

Dear customer,

Because of our new download area powered by Cadenas your old password is invalid. Please register acc. to the following manual.

- Please go to www.reiku.de
- Select CAD Files



[Home](#) [News](#) [Fair schedule](#) [Products](#) [Company](#) [CAD files](#) [Contact](#)



Welcome

CAD models

Help

- Log in
- Register
- Activate
- Activation Mail
- Password ?
- Feedback



Supplier Catalog Browsing



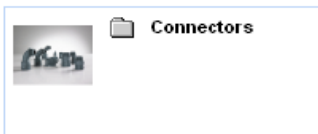
Navigation

[Back](#) [Home](#)

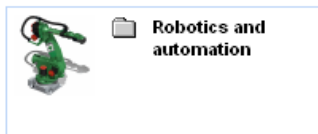
Catalog

[Language](#)

Product groups



Connectors



Robotics and automation



Conduits



Accessories



copyright

- The mask on the left side appears
- Select "Register"



Cadenas introduction manual

* Required fields

Account Data

User name *

Password *

Confirm Password *

Email *

Personal Information

Title *

First name *

Last name *

Company *

Street *

ZIP *

City *

State *

Country *

Phone *

FAX *

General Preferences

Language *

I agree, that my mail address will be used for marketing

Inform me about Cadenas news

Inform me about product specific news

License Agreement

Read licence agreement

I have read and accepted the licence agreement

Please fill in the register mask completely with correct indications. The password must have at least six letters. After fill-out push the button register and your data is transferred to Cadenas. Please have some patience and wait until you receive an answer email with the activation code!!!
If you should already have registered by Cadenas but for another company, please register again.

Attention!
Your indications will be proofed. Customers with wrong indications will be locked. Please do not use free email addresses like web, gmx, yahoo & co. These addresses are generally locked for downloading. Your activities in the files are protocolled and can be read by Cadenas and REIKU GmbH.



Cadenas introduction manual

- Log in
- Register
- Activate
- Activation Mail
- Password ?
- Feedback

After having received the activation email you can choose the link to the download area or you can do it manually. Therefore, select the button "Activate". Afterwards the mask below appears and has to be filled-in. The activation code is to be taken from your activation email. Confirm with "Activate!"

Account activation

Enter your username and your activation code. If you did not receive your activation code, select 'Activation Mail' on the start page.

User name

Activation code

- Log in
- Register
- Activate
- Activation Mail
- Password ?
- Feedback

Now, select Log in (left side) and enter your username and password in the appearing mask on the right side. From now on you can start with "Log in" to enter your account. Please write down user name and password for the next time.



If you don't have a user account yet, you have to create one on the startpage using the 'Register' link

Username

Password



Cadenas introduction manual

Now, you have free access to REIKU drawings and data sheets. The system is made for everybody. Even without a CAD program it can be used by employees from purchasing or sales. The drawings can be downloaded as a 3D-pdf. Technicians and designers can select the data corresponding to their CAD program. They work with native data. The handling is described now.

REIKU

Welcome CAD models Help

Settings
CAD formats
CAD models
Feedback

Supplier Catalog Browsing

REIKU

Navigation General

Back Home Language

Product groups

Connectors Robotics and automation Conduits

Accessories copyright

After the successful login the mask on the left side appears.
The first step is to define the required CAD formats for the download. Please select the button CAD formats.

Now, up to ten different formats can be chosen. Please choose only the formats you really need. It starts with "Add CAD formats".

Actions

+ Add CAD formats

Selected Formats

You can select 10 more formats
You must select at least one CAD format!
The order of several CAD formats will extend the generation / delivery time

Type	Format	Dimension	Direct Into CAD	Actions
------	--------	-----------	-----------------	---------

Save Cancel



Cadenas introduction manual

Generation type

- download
- directIntoCad
- email

Format selection

3D download formats

- Pro/E Wildfire >=I
- SAT V2.0
- SAT V2.1
- SAT V3.0
- SAT V4.0
- SAT V5.0
- SAT V5.3
- SAT V6.0
- SolidWorks >=2001+
- STEP AP203**
- STEP AP214a
- STEP AP214b
- STL
- Think3 >=2006.2
- Tribon M3
- Unigraphics >=NX3
- Viskon >=Serie6
- VRML >=V1.0
- VX (Varimetrix) >=V5.0
- XGL

2D download formats

- Allplan 2008
- BMP (2D View)
- BMP (3D View)
- Cadkey CDL >=V19
- Catia IUA V4
- DWF ASCII 5.5
- DWF Binary 5.5
- DWF Compressed 5.5
- DWG AUTOCAD VERSION 14
- DXF AUTOCAD VERSION 11 - 12
- DXF AUTOCAD VERSION 14
- DXF AUTOCAD VERSION 2000 - 2002
- HP ME 10 >=V9
- HPGL V2
- IGES >=V5.0
- JPEG (2D View)
- JPEG (3D View)
- Medusa >=2000i
- Metafile 2D (PS2) V2
- Metafile 2D V1

Save Cancel

Here, the well-known step-format is chosen. In future, all downloads will be done in this format. You leave this mask with save and the start page described on page 4 opens. Please select the required item while you follow the grouping.

The generation type is up to you. Usually, "download" is selected. The sample works with download. In the format selection you can choose your format and confirm it with save. Only one format can be selected in one step. If more formats are wanted repeat the process.

Action successful

Actions

+ Add CAD formats

Selected Formats

You can select 9 more formats

The order of several CAD formats will extend the generation / delivery time

Type	Format	Dimension	Direct Into CAD	Actions
Download	STEP AP203	3d	<input type="checkbox"/>	Delete

Save Cancel



Cadenas introduction manual

Action successful

- Settings
- CAD formats
- CAD models
- Feedback

Supplier Catalog Browsing

REIKU > Conduits > Static application > Conduits made of Polyamide 6 > PAREG/B - Corr. Tubing PAREG/B

Navigation: Back, Home, Language

Actions:

- Step 1: Generate preview (optional if required)
- Step 2: Generate CAD model or Generate PDF datasheet
- Step 3: Download generated CAD models
- Optional: Request for quotation

CAD models

Search for geometrically similar parts in this catalog [Search]

Hide results below: 1 100 70 %

			LINA Bill of material	Name
<input type="radio"/>	1		PAREB-07G	PAREB-07G
<input checked="" type="radio"/>	2		PAREB-10F	PAREB-10F
<input type="radio"/>	3		PAREB-12F	PAREB-12F



To confirm the download the download button must be pushed. The drawing is downloaded to your computer now. It is zipped.

The sample deals with the REIKU conduit PAREB-10F. "Step 2: Generate CAD model" has to be selected. The generation is started and takes a few seconds, see picture below.

Generating CAD models Close

The generation of CAD models was started.

If you are waiting for the generation, the CAD models can be downloaded in this window directly.

If you close this window, further CAD models can be selected and the generated CAD models can later be downloaded in the 'DOWNLOAD CAD MODELS' area.

Available CAD models

	PAREB-10F	CAD	
--	-----------	-----	--

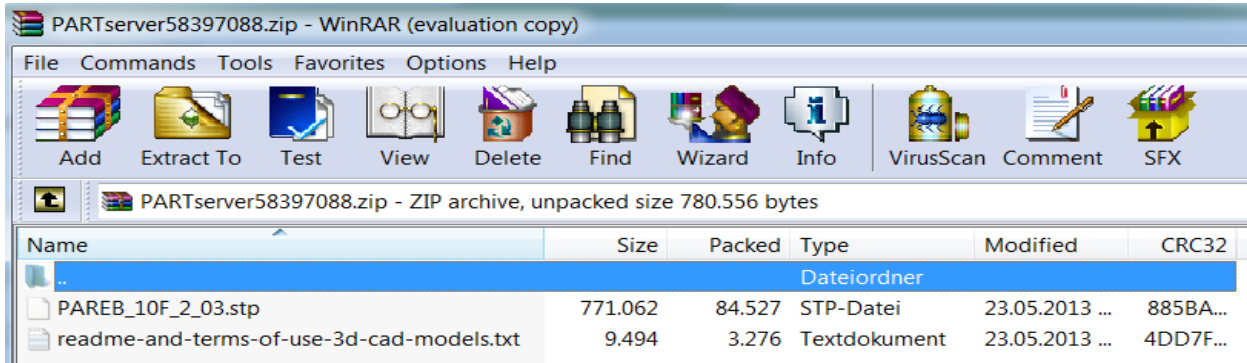
Generating CAD models Close

Available CAD models

	PAREB-10F	CAD		Download		Delete
--	-----------	-----	--	----------	--	--------



Cadenas introduction manual



- Actions**
- Step 1: Generate preview (optional if required)
 - Step 2: Generate CAD model or Generate PDF datasheet
 - Step 3: Download generated CAD models
 - Optional: Request for quotation
- Variables**

PAREB-10F

Name	Description	Value
INFO	PDF Info	Data Sheet
FB	Color	black
NW	Nominal width	10F
A	Length	2 mm
B	Length	3 mm
C	Height	≥ 0.25 mm
D2	Diameter	13 mm
D1	Diameter	9.6 mm
BRS	Bending radius (stat.)	20 mm
BRD	Bending radius (dyn.)	- mm
CNSMASSEXACT	Weight	2.6 kg/100m
VE	Purch. Unit	100 m

Select file...

Search

CAD model preview

Preview **Dimension diagram**

This is a pregenerated default dimension drawing. It may differ from your current selection.

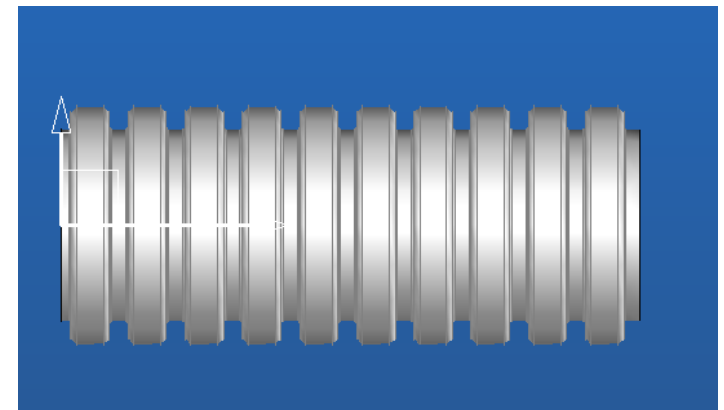
Hide preview
Size: 100x100

Front view

Profil Section
Tubing

Download CAD models

After the drawing is unpacked it can be loaded into your CAD program. Please do not forget to save the drawing.



Who does not have a CAD program can work with the dimension diagram (left side) or selects for a 3D view like described on page 6 under „Step 2: Generate pdf data sheet“. Who likes to have everything on one view can download the required data sheet, see red arrow. Who likes to work deeper with Cadenas can work with their help that can be found in the start mask.

Good luck! Your REIKU Team!